

Fibre Optic Termination Box 208-183 Installation Manual

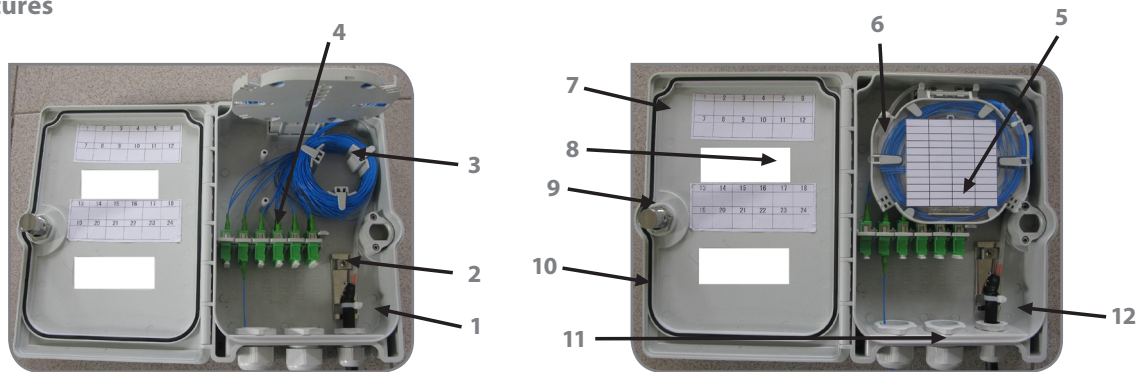


The 208-183 enclosure is light and compact; rated to IP65 and lockable with the capability of splicing up to 12 fibres using SC connectors.

1. Features

208-183	Wall-Mounting installation		
IP Level	IP65		
Size	258x186x61mm	Application	Outdoor cable Indoor soft cable
Suitable for	6pcs of SC duplex	Max. Capacity	12 fibres ----SC 24 fibres --LC QUAD

2. Product Pictures



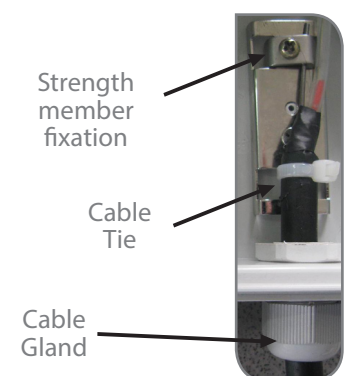
- | | | |
|--------------------------|-----------------------------|------------------------------------|
| 1. Base | 5. Splice protection holder | 9. Lock |
| 2. Cable clamp | 6. Splice tray | 10. Sealing gasket |
| 3. Pigtail spooling area | 7. Labeling cover | 11. Cable Exit Compression Glands; |
| 4. Adaptor plate mounts | 8. Internal labeling | 12. Incoming Cable |

3. Usage

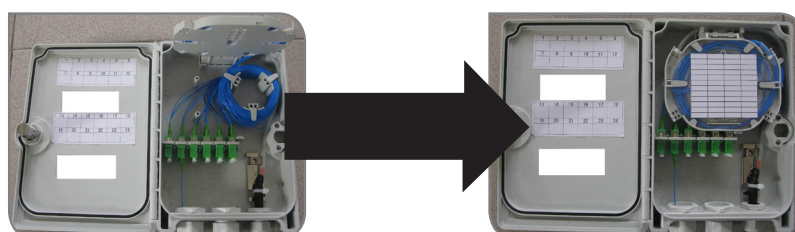
3.1 Open the outer package of box

3.2 Using the key, open the box

3.2 Measure 120cm from the end of cable and strip the protective layers. Cut the cable strength members at 30mm from the butt of the cable jacket. Using the supplied transit tube, feed the exposed 250µm fibres through the tube and secure it to the cable jacket using insulation tape. (Please see the images below for an example of the outdoor cable application). Feed the incoming cable through appropriate position in the box [12] and tighten the compression gland onto the main cable jacket. Using a cable tie secure the main cable jacket to the cable clamp [2] and secure the cable strength member by tightening the screw [2]. Meanwhile, adjust the cable tie and gland.



3.4 During the loading of pigtails, the splice tray needs to be hinged upwards to allow access to the connection and spooling area. Should you need to the splice tray can easily be removed from the hinge point via its snap fit. (Please see the below pictures)



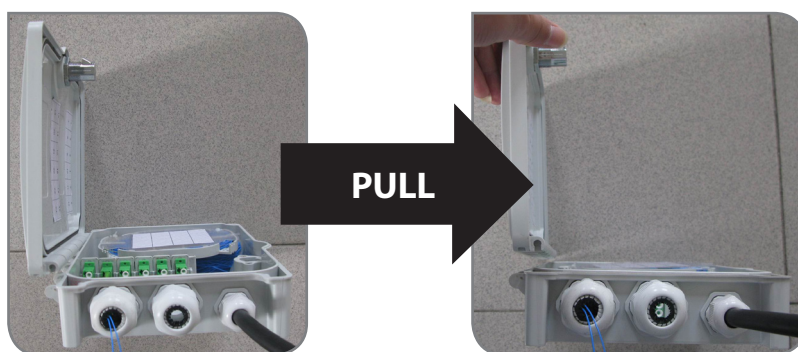
3.5 Connect the pigtails with their respective adapters and route the tails into the splice tray from the right-hand side and cable tie in place. Route the transit tubing into the left-hand corner of the splice tray and secure with a cable tie. Splice the pigtails with the incoming cable using the supplied heat shrink splice protectors. After heating the protective sleeve, secure into the holder within the splice tray. The fibres can be coiling in the splice tray while the remainder of the 900µm tails can be coiled into the spooling area.



3.6 Exiting patch cords need to be fed directly out of the adjacent compression glands using the appropriate multi-hole inserts.

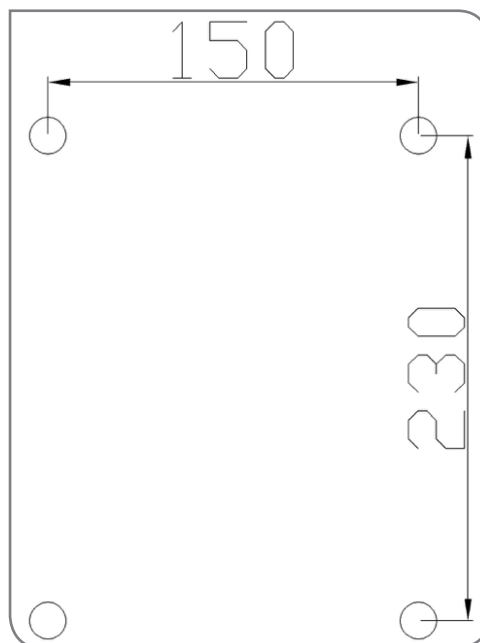
3.7 Removing the door

If you need to remove the door, open the door to a vertical position. Note, it must be in a vertical position, as the door can be damaged if not.



4. Install Construction

4.1 Drill 4 holes in the mounting wall suitable for M4 Raw plugs in the positions below: -



4.2 Put raw plugs into the holes

4.3 Mount the box onto the wall using the supplied M4x25 self-tapping screws.