

Case Study

City of Westminster College

Customer	City of Westminster College
Location	London
Requirements	Fully networked new college build
Equipment	Excel Cat 6 _A F/FTP and Excel Fibre

Customer's View

"The College has created an inspiring 21st century environment in its new high-specification Campus on Paddington Green. A building of this calibre demands a sophisticated and reliable network infrastructure to enable students and staff to maximise the benefits of new teaching, learning and communications systems. This is what we now have thanks to the Excel products installed."

Paul Hardman, (Network Manager) City of Westminster College

excel
without compromise.

The City of Westminster College offers around 250 full and part-time courses to over 7,000 students each year in the centre of London and has recently undergone an ambitious and exciting programme of redevelopment.

The main element of the programme has been the new Paddington Green Campus, offering an outstanding teaching and learning environment within an exceptional seven-storey building. The new Campus, which opened in January this year, was designed by award-winning international architects schmidt hammer lassen and has received both a Royal Institute of British Architects' 2011 RIBA Award and an NLA New London Award.



Set in the heart of Westminster, the Campus features a large atrium and accessible roof terraces. It provides state-of-the-art facilities, including specialist science labs, a double-height Sport England-specification sports hall and a wide range of workshops, as well as offering community access to new facilities such as the Sarah Siddons Theatre and a public café overlooking St Mary's Gardens.

The College has invested in technology and teaching aids to ensure a truly 21st Century environment in the new building, enabling students to 'learn anytime and anywhere'. To support new styles of learning and teaching, a key focus was on ensuring a flexible networked environment that could keep pace with technological developments and meet both current and future demand from staff and students.

Able Data, a leading Voice and Data cabling infrastructure provider specialising in the design, installation and maintenance of high quality structured cabling solutions, including Data and Voice networks, was chosen by the consultants employed. Formed in 1988, Able Data has grown from a small maintenance operation into one of the leading network solutions providers in Europe.

Alex Hudson, Project Director for Able Data took the decision to install the Excel product set along with a number of Sinetica power distribution and monitoring products. Alex Hudson says, "With the size of this project, a tender process took place, but the strength of the products on offer and the commitment of all the parties involved eventually meant that Excel the first choice and we were very pleased with that."

Excel is a complete, end-to-end networking solution, offering exceptional performance, reliability and support, manufactured to European quality standards and covered by one warranty. With an emphasis on compatibility and standards compliance 'from cable to cabinet', reliability and product availability, Excel is the complete value for money solution.

Excel Category 6_A – Augmented Category 6 – cables, and associated connectors, take the performance capabilities of copper infrastructure to new levels. The cable has been designed to exceed the ISO/IEC, TIA and CENELEC for Category 6_A /Augmented Category 6 component requirements. This delivers Class EA/Augmented Category 6 link performance over distances of up to 90 metres which supports the applications including 10GBASE-T, 10 Gigabit Ethernet.



The Excel fibre range provides a broad choice of multimode and singlemode solutions. Excel's OM3 Multimode Tight Buffered Fibre cables are constructed from a number of 900Um buffered fibres which are colour coded and packed in water resistant rodent protected strength members. The outer sheath is both flame resistant and low smoke zero halogen (LSOH). The design and construction of this range has resulted in a light, easy to install, cost effective cable.

When installed by an accredited Excel Cabling Partner, which Able Data is, both the copper and fibre cables installed were supported by a comprehensive 25 year warranty programme, offering longevity and peace of mind for the College.

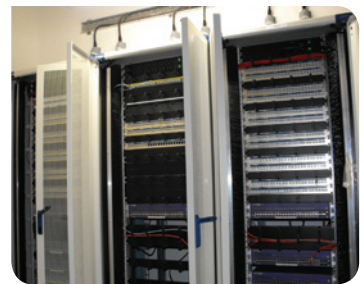
Able Data worked closely throughout the project with Paul Cave, Market Development Manager for Excel, conducting a number of site visits to cover areas such as the planned routes for the cabling. Paul Cave continued to visit the site on a fortnightly basis to provide a support function to the installation team, dealing with a number of issues, such as technical questions arising around the installation of the Cat 6_A solution.

The engineers had a large number of challenges to face throughout the duration of the install. As the building is of a very contemporary design, most of the surfaces are concrete, meaning no services were able to run in the ceiling, everything had to be positioned under a false floor.

Due to this being a major construction site, many occasions saw a large number of workmen operating in the same area. Able Data's engineers needed to demonstrate flexibility and professionalism to ensure their part of the install was carried out to agreed timescales, sometimes relocating to other areas of the building to continue working.

There was a large period of time where the building itself was not fully watertight, again this proved challenging for the Able Data installers. Another challenge was to position cabling in a building that also had to accommodate a large amount of other services, such as air conditioning ductwork. This was successfully resolved through onsite meetings with other installation teams.

Paul Cave comments, "This was a major installation using Excel products, but due to their quality and longevity, the College can be assured of reliable infrastructure well into the future. The project required a large number of dedicated people to work closely together, from the very initial design right through to the completed installation, and it's thanks to such a strong team that the project was completed so successfully."



Tel 01442 219580
www.abledata.co.uk

Result

The system installed will help City of Westminster College to continue to meet its mission and vision to be excellent in every way and provide outstanding education and training to enable learners to achieve their full potential.

European Headquarters

Excel House
Junction Six Industrial Park
Electric Avenue
Birmingham B6 7JJ
England

T: +44 (0) 121 326 7557
F: +44(0) 121 327 1537
E: sales@excel-networking.com

www.excel-networking.com

